



STEP IN BATH & SHOWER
CONVERSION SYSTEM

OWNER'S MANUAL

IMPORTANT INFORMATION

Bathe Again Inc. would like to thank you for purchasing this product. **Please take the time to read the brief instructions, care of your door and the accompanying warranty information.** With proper care your unit should provide you with years of worry free bathing.

Note that some of the information in this document pertains to: (a) the insert; (b) the seal between the insert and your bathtub; and (c) the installation of the insert, the installation of the seal between the insert and your bathtub and the installation of the door (the "Excluded Items"). Bathe Again Inc. is providing this information to you because it is important information for you to have. However, Bathe Again Inc. does not take responsibility for issues pertaining to the Excluded Items and refers you to the manufacturer of the insert, and to the installer and the applicator of the seal, in respect of any such issues.

BEFORE TESTING OR USING YOUR DOOR FOR THE FIRST TIME

It is extremely important that you inspect the integrity of the seal between the step through insert and your bathtub. This is true for both existing and new installations. The only way to properly inspect the seal on the underside of the insert is by using a small hand mirror. Any visible voids, gaps, holes or cracks should be filled in with fresh sealant. If you are unsure then contact your original installer or apply additional sealant to those areas.

NOTE: If you have had to apply sealant anywhere, you must wait a minimum of 24 hours before attempting a water test (48 hrs is preferred and recommended).

If you purchased this unit as part of a new installation package then your installer should have made any necessary adjustments to your door. In all probability you should not need to make any adjustments, however please take note of the wait time above before testing or using your new unit for bathing.

BASIC OPERATION OF THE DOOR

The door can be picked up at the ends or in the center under the ledge on each side.

Lift the handles into the up position and place the door over the step through insert taking care to keep it centered as much as possible (Fig. 1).

Figure 1



Figure 2



Figure 3



- The door will work when off center however to ensure that the best possible sealing action is achieved it is recommended that you keep the door centered as much as possible.

Using both hands push the handles into the down position (Fig 2).

- You should begin to feel some tension in the handles by the 1/2 way point.
- Try opening and closing the door a few times to get a feel for it's open / close action.
 - *The handles are under tension so it is recommended that you maintain control while lifting the handles and opening the door. Do not just "flip" them up.*
- For a slightly smoother closing action you can push or pull the door up against the step through insert before activating the handles.

The door has been shipped pre-adjusted to work with your model of step through insert. Due to step through insert and installation variation some minor adjustment may be required. These adjustments if they are needed should only take a few minutes.

ADJUSTING YOUR DOOR

- You will need either a 1/2" or 13 mm wrench in order to make the necessary adjustments.
- Lay the unit flat so that the handles are facing up and lift the handles to open the unit fully (Fig 3).
- Flip the unit 90° and place the unit on its top surface so that you can look inside at the hardware (Fig 4).
- Hold the handle while doing the following steps to avoid twisting the assembly.

If your handles close too hard

1. Apply the wrench and back off the lower nut by 1/2 to one full turn (Fig 5).
2. Apply the wrench to the inside nut and turn it by 1/4 to 1/2 turn in the same direction as in step 1 above (Fig 6).
3. Apply the wrench to the lower nut and tighten it against the plate assembly; do not over tighten.
4. Follow steps 1 through 3 making the same adjustment to the other handle that you have made on the first handle.
5. Try the door on the step through insert. If you feel that additional adjustment is required then repeat the above steps until you are satisfied with the tension.

If your handles close too easily

1. Apply the wrench and back off the inside nut by ¼ to ½ turn (Fig 7).
2. Apply the wrench to the lower nut and turn it in the same direction as in step 1 until tight; do not over tighten (Fig 8).
3. Follow steps 1 and 2 to make the same adjustment to the other handle that you have made on the first handle.
4. Try the door on the step through insert. If you feel that additional adjustment is required then repeat the above steps until you are satisfied with the tension.

NOTE: If your handles appear to be twisted slightly after making your adjustments, you can gently twist them back into a 90° position (Fig 9.)

WATER TESTING YOUR DOOR

IMPORTANT: Before testing or using your door the first time.

Have you checked the integrity of the seal between the step through insert and the bathtub?

Please refer to the information contained on the first page (cover page)

1. Place the door into position and close it
2. Close the drain on the bathtub and begin filling the tub.
DO NOT LEAVE THE BATHTUB UNATTENDED WHILE IT IS FILLING WITH WATER
3. Once the water reaches the lower ledge on the inside of the door you will need to be watchful of water leaking out (Fig. 10).
4. Shut off the water immediately if you notice any water escaping on the outside of the tub.
5. Drain off some water so that you can remove the door.
6. Follow the directions under – If your handles close too easily
7. Dry any wet areas on the outside of the tub or floor.
8. Repeat steps 1 through 3
9. If the door appears to be watertight then allow the tub to fill to its highest level (below overflow) and allow the water to sit.
10. Take a note of the water level. Use masking tape on the door or tub to mark the water level.

11. Allow the water to remain in the tub for about two hours – stay present for the first 10 minutes or so, thereafter check the water level frequently. There should be no loss of water.
12. If there has been water loss:
 - a. If there is water visible on the outside of the tub or on the floor then the door is not sealing correctly and requires some additional adjustment.
 - b. If there is no water visible on the outside of the tub or on the floor then the seal between the step through insert / tub needs further inspection and repair.
13. If there has been no water loss then you are finished and can now begin to use your door.
14. Should you continue to experience difficulties obtaining a watertight seal then please contact your installer or one of the numbers listed on the warranty information sheet.

TAKING CARE OF YOUR DOOR

Storing your door

Your door can be left in place when not in use or it can be stood up on its end in a convenient location out of the way.

It is recommended that you leave the handles in the open position if you are leaving the door on the bathtub when not in use.

Cleaning your door

The door can be cleaned with warm soapy water. Use a mild liquid detergent such as dish washing detergent to clean the door. Rinse with clean water. If the surface has acquired too much grime for easy cleaning with warm soapy water, then you may need to use a non abrasive household cleaner; make sure that you follow the manufacturer's instructions for the product. Ensure that the door is rinsed properly as the chemicals in the cleaner could adversely affect the finish or function of the door, thereby voiding your warranty.

The seal is made of silicone. All you should require is a wet cloth to clean off any visible soap scum or dirt. Do not use sharp instruments or pull on the seal as there is a risk of damaging the seal.

Handle assemblies are made of chrome plated castings and warm water should be sufficient for cleaning them. They can be buffed with a soft cloth to bring out the shine. It is not recommended that any form of chrome cleaner be used as it may transfer to the main panels and adversely affect them.

Figure 4

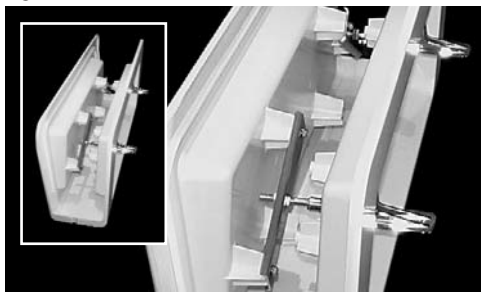


Figure 5

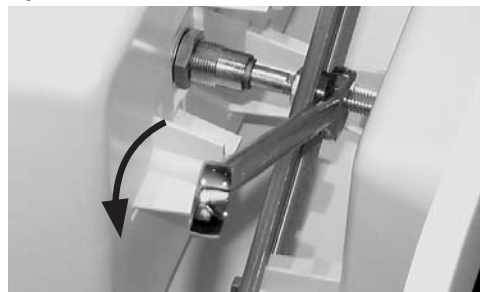
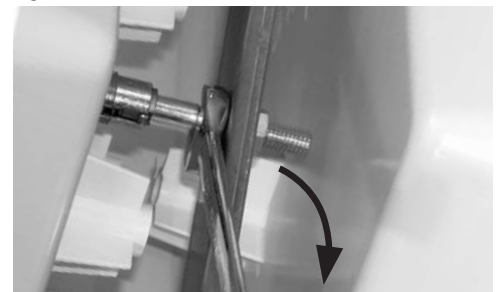


Figure 6



Most of the remaining hardware is stainless steel with a select few items being plated steel to protect them from rust and as such they should offer worry free performance.

Yearly check of door

It is recommended that you check the seal between the step through insert and bathtub as well as water test your door on an annual basis. In addition to that make note of any unusual water loss when bathing. This could signify that there is a leak present.

Please be sure to read the accompanying warranty information in order to understand what is covered and what your responsibilities are in maintaining your warranty coverage. Please note that it is the homeowner's responsibility to ensure that the seal integrity is maintained.

Figure 7



Figure 8



Figure 9

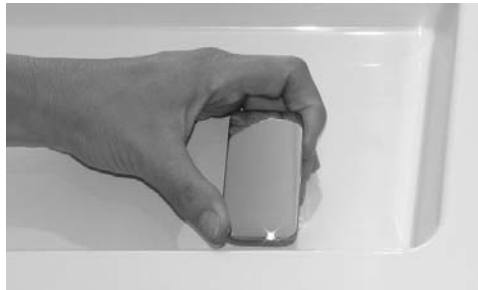


Figure 10



IMPORTANT SAFETY INSTRUCTIONS

- ❑ **WARNING: Risk of personal injury.**
To avoid injury, exercise caution when entering or exiting your step in tub.
- ❑ **WARNING: Risk of personal injury.**
To avoid injury, do not use the step through insert as a "step". Although the unit may support your weight it has not been designed with this purpose in mind.
- ❑ **WARNING: Risk of personal injury.**
To avoid injury, do not sit or place your weight on the door. It has not been designed for this. Undue weight could cause the unit to break or crack.
- ❑ **WARNING: Risk of personal injury.**
Water temperatures over 100° F (38° C) may be hazardous to your health. Check and adjust water temperature for your personal comfort.
- ❑ **WARNING: Risk of personal injury.**
Risk of electric shock; do not permit the use of electric appliances (such as hair dryer, lamp, telephone, radio, television, etc) within four feet of your bathtub.
- ❑ **WARNING: No food or Alcoholic beverages.**
Use of your bathtub immediately after meals is not recommended. Avoid alcohol consumption before or during the bathing. Alcoholic beverages can cause drowsiness or hypothermia resulting in loss of consciousness or even drowning.

SAVE THESE INSTRUCTIONS!

Obtaining Warranty Service or additional Product Information - Please contact your original installer to arrange for warranty service. You may also contact the number listed below to get additional information or the phone number of your local service person.

Bathcrest 1.800.826.6790 | Bathe Again 1.416.709.7072

For any technical or product use related questions contact the above telephone numbers or:

Email: info@quicktub.com | Web: www.quicktub.com